



High-grade gold and critical-minerals exploration in Tier-1 jurisdictions

Gold • Silver • Copper in
Tier-1 Jurisdictions – Nevada • Ontario

Corporate Presentation Q2 2026



Disclaimer

FORWARD LOOKING STATEMENT

This presentation may contain "forward-looking information" within the meaning of applicable securities laws relating to the trading of the Company's securities and the focus of the Company's business. Any such forward-looking statements may be identified by words such as "expects", "anticipates", "intends", "contemplates", "believes", "projects", "plans" and similar expressions. Forward-looking statements in this news release include statements regarding the Company's ability to increase the value of its current and future mineral exploration properties and, in connection therewith, any long-term shareholder value, the Company's ability to mitigate or eliminate exploration risk, and the Company's intention to develop a portfolio of historic gold properties. Readers are cautioned not to place undue reliance on forward-looking statements. These statements should not be read as guarantees of future performance or results. Such statements involve known and unknown risks, uncertainties, and other factors that may cause actual results, performance, or achievements to be materially different from those implied by such statements. Although such statements are based on management's reasonable assumptions, there can be no assurance that the Company will continue its business as described above. Readers are encouraged to refer to the Company's annual and quarterly management's discussion and analysis and other periodic filings made by the Company with the Canadian securities regulatory authorities under the Company's profile on SEDAR at www.sedar.com. The Company assumes no responsibility to update or revise forward-looking information to reflect new events or circumstances or actual results unless required by applicable law.

QUALIFIED PERSON

James Atkinson M.Sc., P. Geo., a Qualified Person ("QP") as such term is defined by National Instrument 43-101 - Standards of Disclosure for Mineral Projects, has reviewed and approved the geological information reported in this news release. The Qualified Person has not completed sufficient work to verify all historic information on the Property, particularly with regards to historical sampling, drill results, and technical work provided by Carolina Gold Resources and others. The Qualified Person assumes that sampling and analytical results were completed to industry standard practices. The information provides an indication of the exploration potential of the Property but may not be representative of expected results.

Why Invest in AUEX



Tier-1 Jurisdictions (Nevada & Ontario)

Premier mining regions with excellent infrastructure and supportive government policies



Critical Minerals Leverage

Antimony-rich CRD at Silver Belle and copper VMS align with rising North American strategic demand.



Tight Share Structure & Experienced Management

Lean capitalization directs funds into exploration, backed by over 40 years of expertise.



Three High-Grade Projects

Doyle gold, Buck Lake VMS, and Silver Belle CRD deliver proven bonanza-grade mineralization:



1,600 g/t Ag



3,000 g/t Sb



Large Untested Land Packages (>11,000 ha)

Extensive underexplored ground offers major discovery potential and clear expansion upside.

Projects

Total
11,000+ ha
across two Tier-1 areas



Silver Belle **Nevada**

47 ^{107,862}
Ag
Silver

Bonanza-Grade CRD
Silver-Polymetallic

51 ^{121,760}
Sb
Antimony

Antimony

Buck Lake **Ontario**

29 ^{63,546}
Cu
Copper

30 ^{65,38}
Zn
Zinc

VMS Cu-Zn

47 ^{107,862}
Ag
Silver

Silver

Doyle Gold **Ontario**

79 ^{196,967}
Au
Gold

Orogenic Gold

☆ **2026 Exploration Catalysts**

- Silver Belle: First modern mapping & sampling
- Doyle: Geophysics + drill on high-grade centres
- Buck Lake: Step-out drilling on EM corridor
- Low-cost, high-impact programs

Silver Belle

Nevada


Location


Diamond District, Eureka County, Nevada


Overview

Silver Belle Nevada is a historic high-grade silver-polymetallic CRD project in Nevada's Diamond District on the world-class Eureka-Battle Mountain belt. Originally worked in the 1930s, the project has seen zero modern exploration and shows strong potential as a large-scale Carbonate Replacement Deposit (CRD) system.

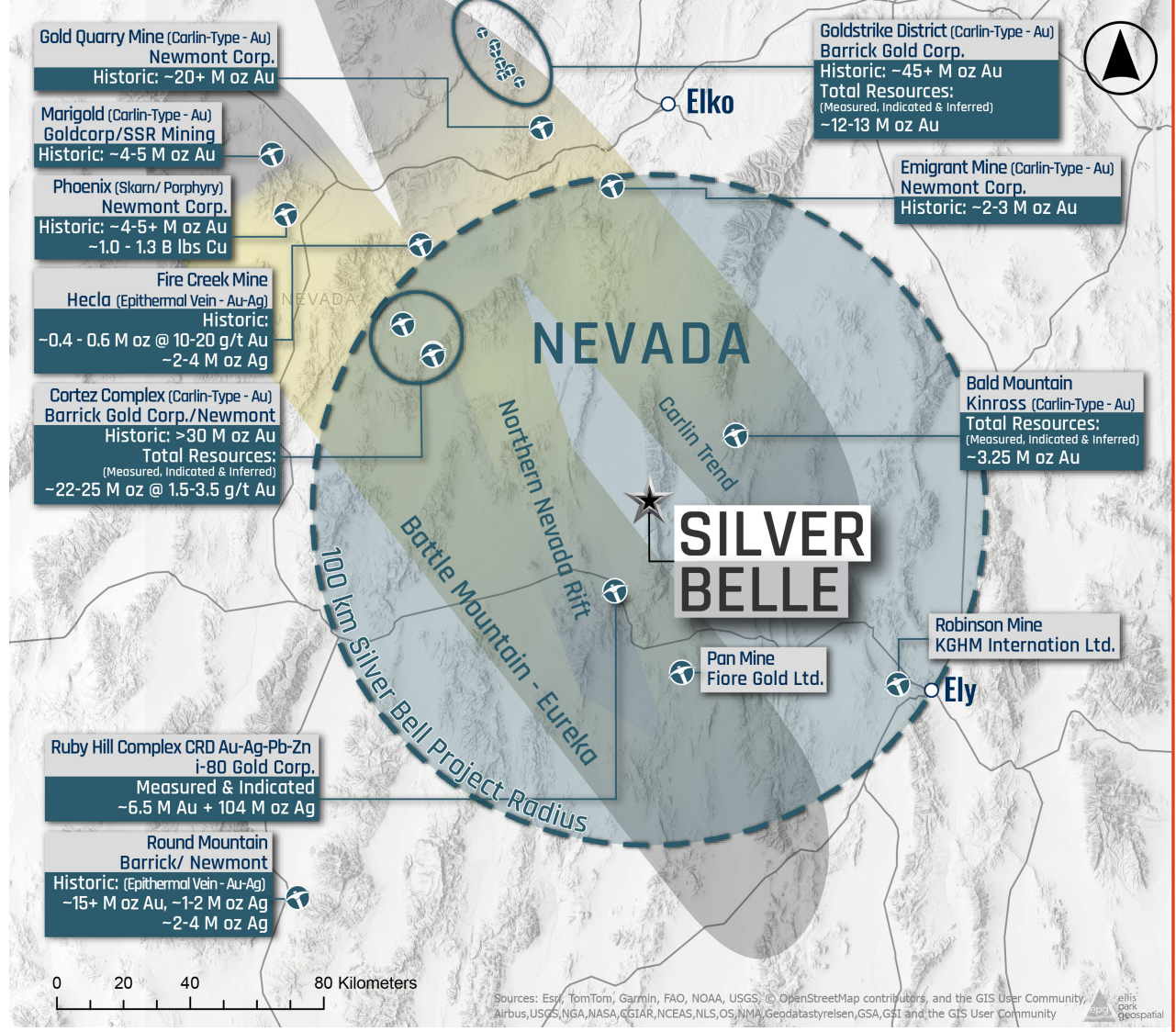
Highlights

- 

Bonanza-grade production
1937 smelter shipment returned **1,611 g/t Ag + 3,000 g/t Sb** plus 37% Pb, 10% Zn, 1% Cu from 21 tons of underground ore
- 

Classic CRD metallurgy
Textbook metal suite (argentiferous galena, sphalerite, chalcopyrite, stibnite + oxide caps)
- 

Untested depth & scale
Shallow oxidized cap only; deeper CRD core and extensions remain untested.



Directly on the world-class Eureka-Battle Mountain mineral belt

Nevada

Silver Belle

History

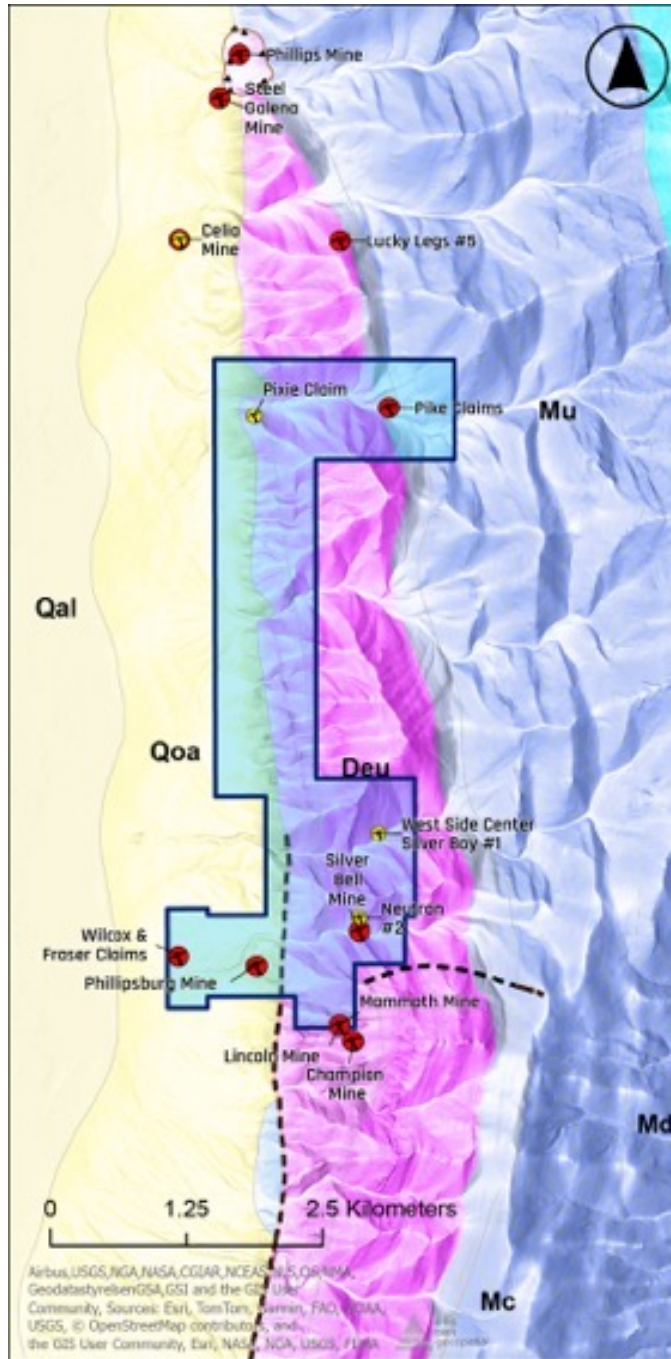
First discoveries: Originally worked in the 1930s by Silver Belle Mining Co.; ~500 ft of underground workings (shaft + multiple adits & cross-cuts) driven directly on the mineralized structural-stratigraphic corridor.

Geology

Classic CRD silver-polymetallic system (Ag-Pb-Zn-Cu-Sb) at reactive limestone-quartzite contact, intensely silicified, cut by north-south structures dipping 60° west – ideal architecture for vertically extensive CRD ore shoots.

Expansion Potential

Large land package – 2,000-acre / 100-claim block (~809 ha) with open ground to the north, south, and west for immediate expansion. Strong structural corridor with multiple vertically extensive ore shoots; no drilling, geophysics, or modern exploration ever conducted.



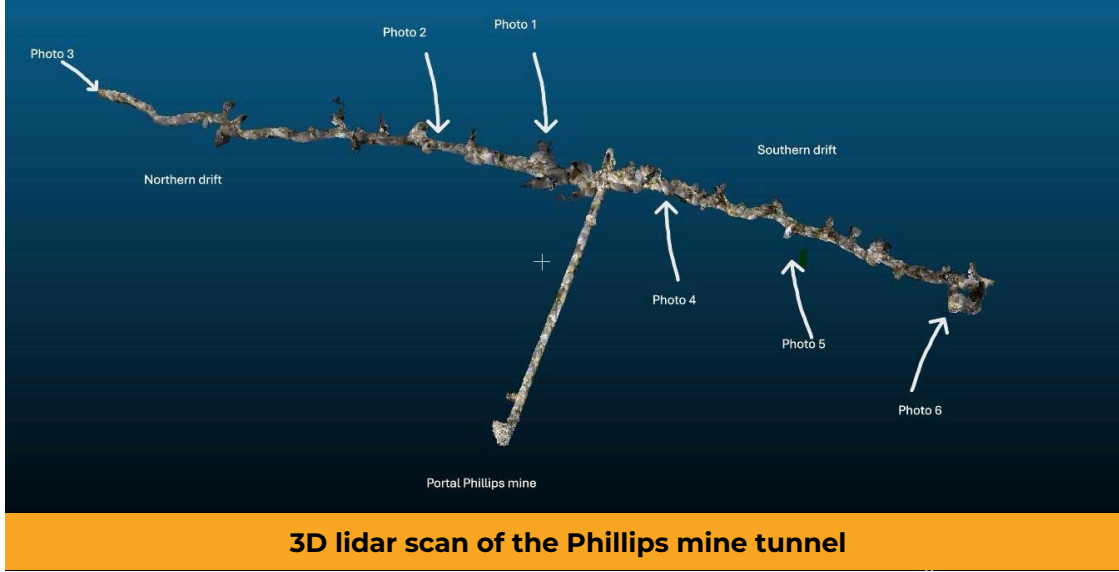
LEGEND NEVADA GEOLOGY

- Qya** – Younger alluvium
- QTg** – Older gravels (Pleistocene-Pliocene)
- QToa** – Older alluvium and alluvial-fan deposits (Pleistocene-Pliocene)
- IPMbc** – Bioclastic limestone (Pennsylvanian-Upper Mississippian)
- Dc** – Limestone and minor dolomite (Upper-Middle Devonian)
- DSc** – Dolomite (Lower Devonian-Silurian)
- Pacl** – Sandstone, siltstone, limestone, conglomerate, and carbonaceous limestone (Permian)
- IPMcl** – Shale, siltstone, sandstone, and conglomerate (Middle Pennsylvanian-Lower Mississippian)
- MDcl** – Siltstone, limestone, shale, and sandstone (Lower Mississippian-Upper Devonian)
- Dots** – Calcareous shale, siltstone, chert, quartzite, and greenstone (Devonian-Ordovician)

Silver Belle

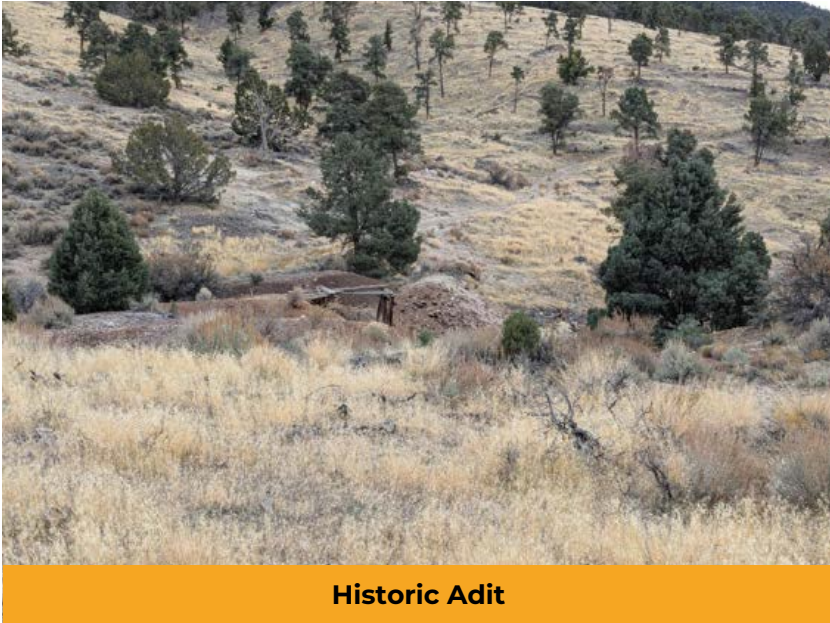
Nevada

Phase 1 Work Program



Silver Belle

Nevada



Historic Adit



Project Access Road



Historic Tailings



Rock Sample From Ore Pile

Buck Lake

Ontario




Location

Batchawana Greenstone Belt, Ontario

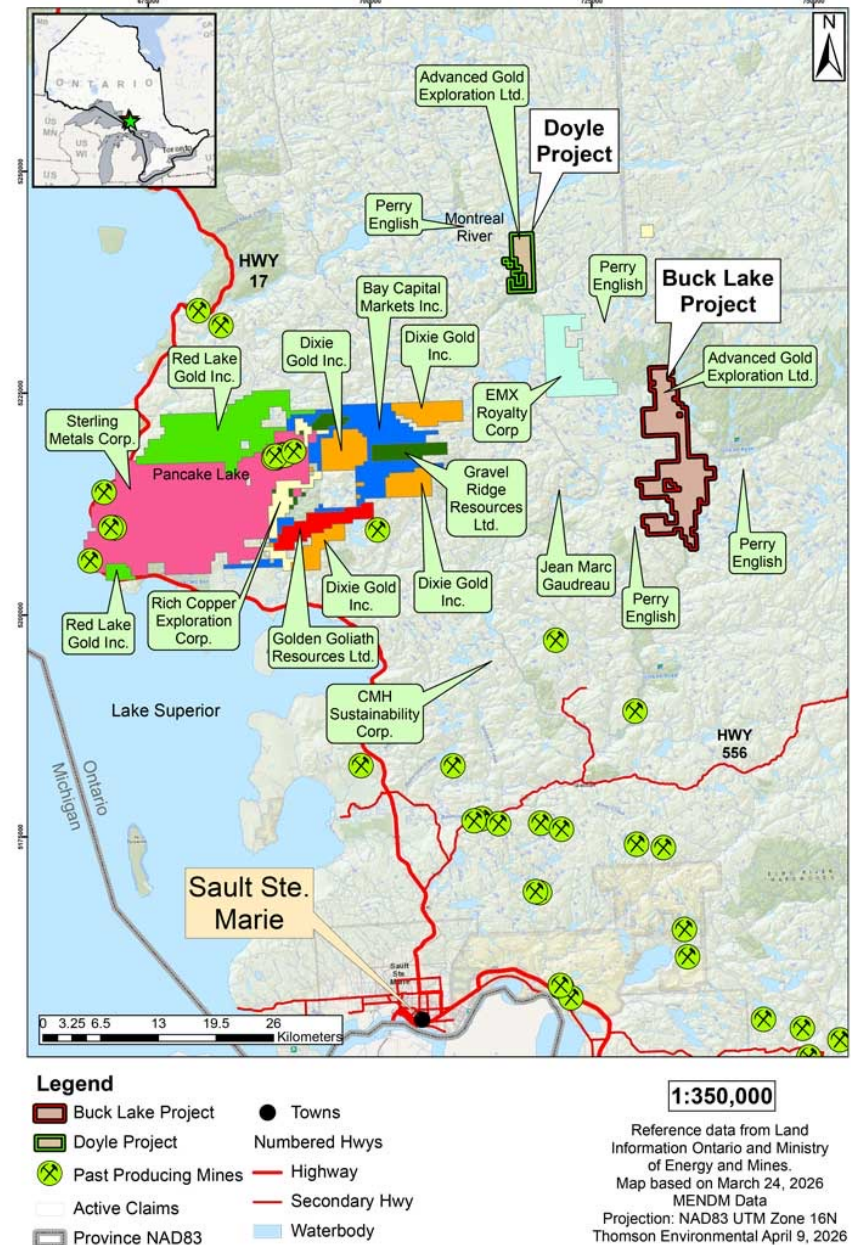
Overview

Buck Lake is a high-grade VMS Cu-Zn system in Ontario's Batchawana Greenstone Belt with massive to semi-massive sulphides already intersected in drilling. The project sits on a 3,500 m EM corridor that remains open in all directions.

Highlights

- 
Recent high-grade intercepts
 4.59% Cu over 3.1 m (within 1.51% Cu over 11.75 m) from 15 holes (2,540 m)
- 
Historical high grades
 Up to 15% Cu and 12-15% Zn reported from 37 holes (8,053.5 m)
- 
Large EM target
 3,500 m corridor with gold in higher-grade Cu zones and room for step-out drilling

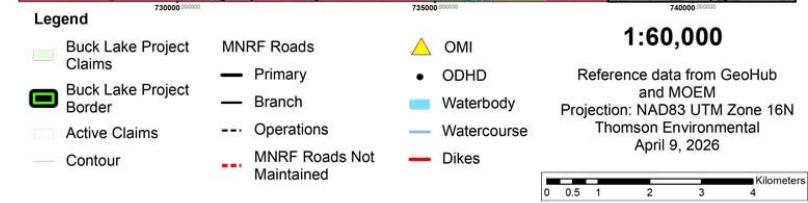
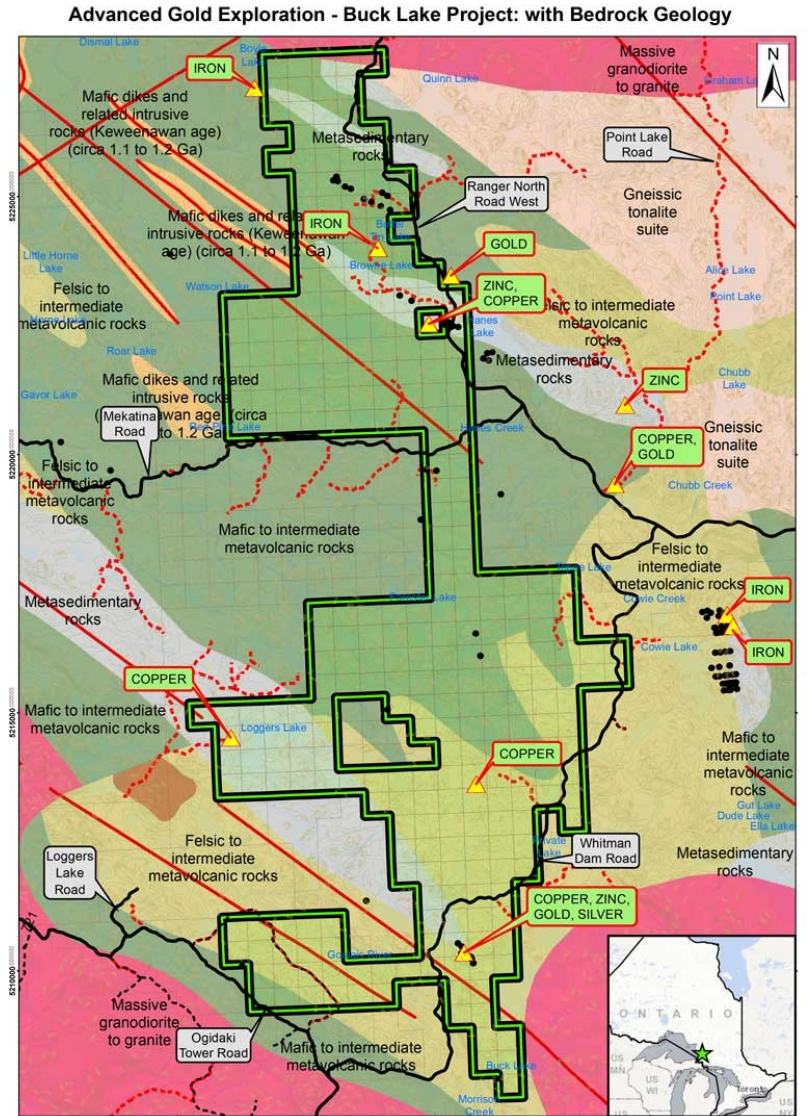
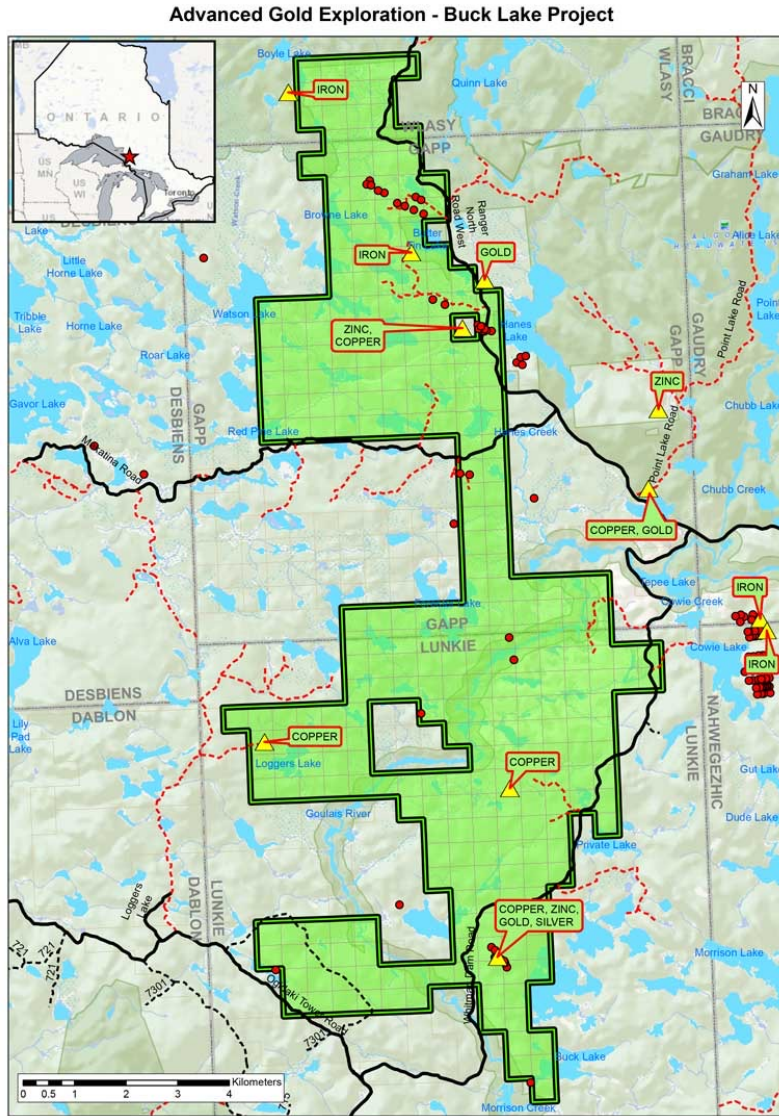
Advanced Gold Exploration Ltd.
Buck Lake and Doyle Projects with Adjacent Activity



9
20

Ontario

Buck Lake



10
20

High Grade VMS

Buck Lake

Ontario

History

Historical Cu-Zn showings in trenches and early drilling; recent stripping, channel sampling, and 2022–2025 drilling confirmed multiple Cu-Zn zones with massive sulphides in 13 of 15 holes.

Geology

Volcanogenic Massive Sulphide (VMS) Cu-Zn in Archean volcanic sequences; massive to semi-massive sulphides at surface and in drill core.



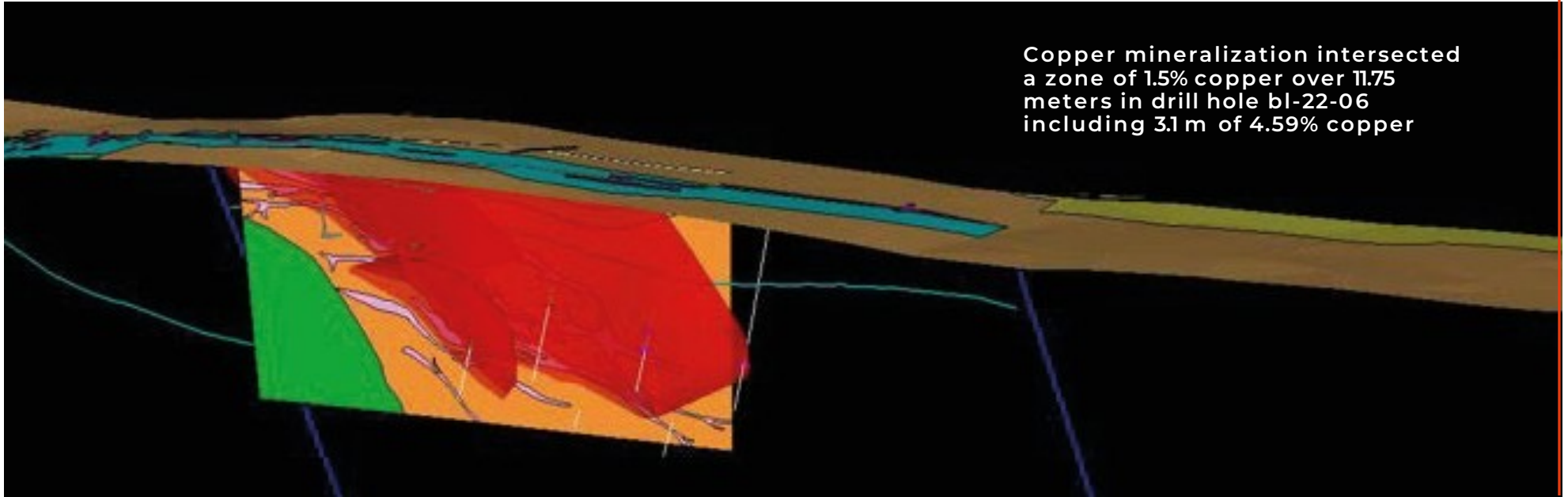
Massive Sulphide in Drilling



More Sulphides With Exhalite

Previous Drilling

| BL-22-06 | From (m) | To (m) | Length (m) | Copper % |
|-----------|----------|--------|------------|----------|
| | 35.35 | 47.10 | 11.75 | 1.51 |
| Including | 42.35 | 45.45 | 3.10 | 4.59 |



Buck Lake

Ontario



Channel Sampling



Massive Sulphide in Outcrop – 3 M Wide

12

20

Ontario

Doyle

Location

Batchawana Greenstone Belt, Ontario

Overview

Doyle is a high-grade orogenic gold project in Ontario's Batchawana Greenstone Belt. It shares the same geological setting and mineralization style as the world-class Hemlo deposit (located only ~20 km away and >21 Moz Au production). The project has 8,000+ metres drilled as stated in the 43-101.

Highlights

- 

Three priority high-grade centres already defined by drilling

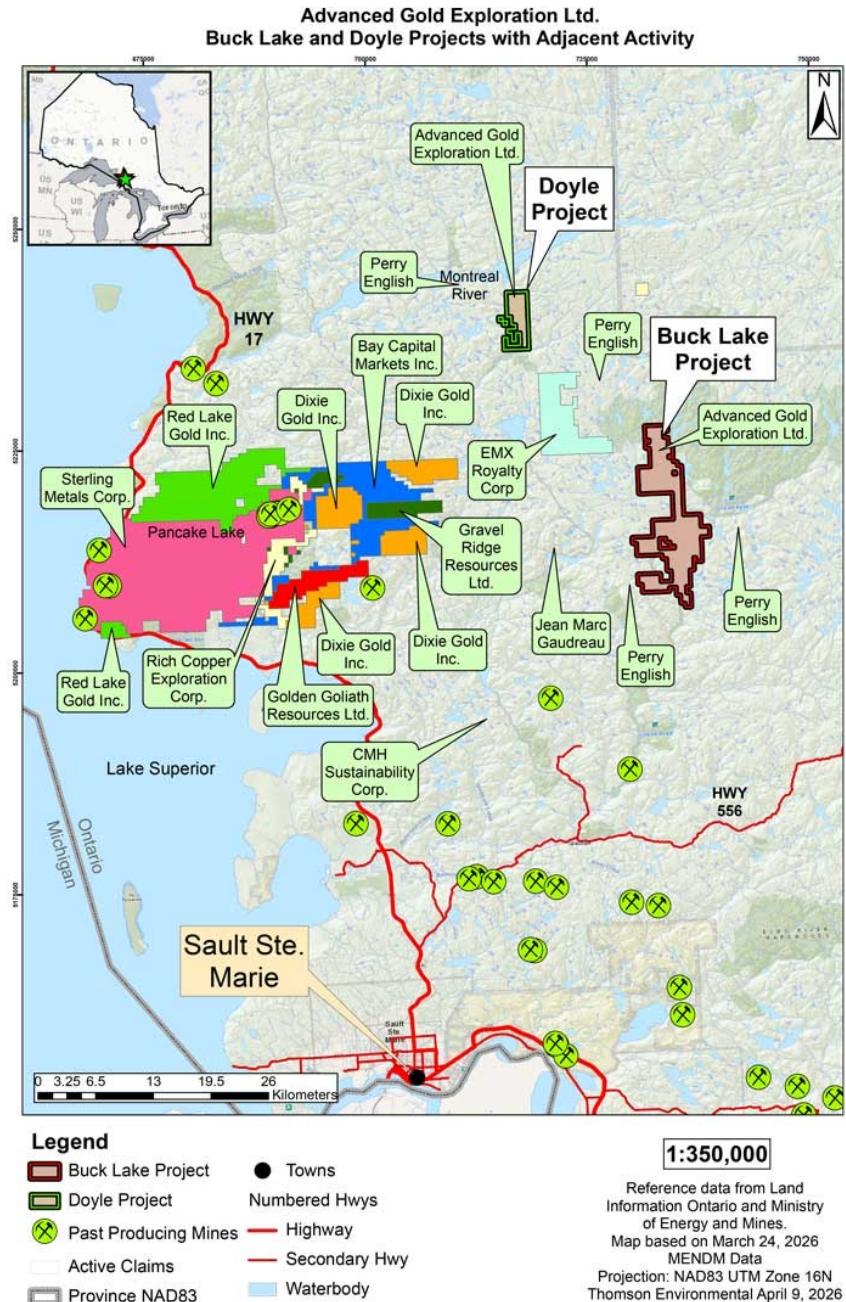
 - **Hole 94-22: 46 g/t Au** over 1 m in quartz vein with visible gold;
 - **Hole 95-34: 14.6 g/t Au** over 1 m (within 9 m @ 2.5 g/t Au) in disseminated pyrite with visible gold;
 - **Hole 93-03: 7.5 g/t Au** over 1 m in massive sulphides
- 

All three zones remain open

No drilling since 1995; widespread anomalous to lower-grade mineralization across the property
- 

Clear path to new discoveries

Recent LiDAR and airborne geophysics define major shears linked to these centres, enabling targeted geochem, trenching, and focused drilling

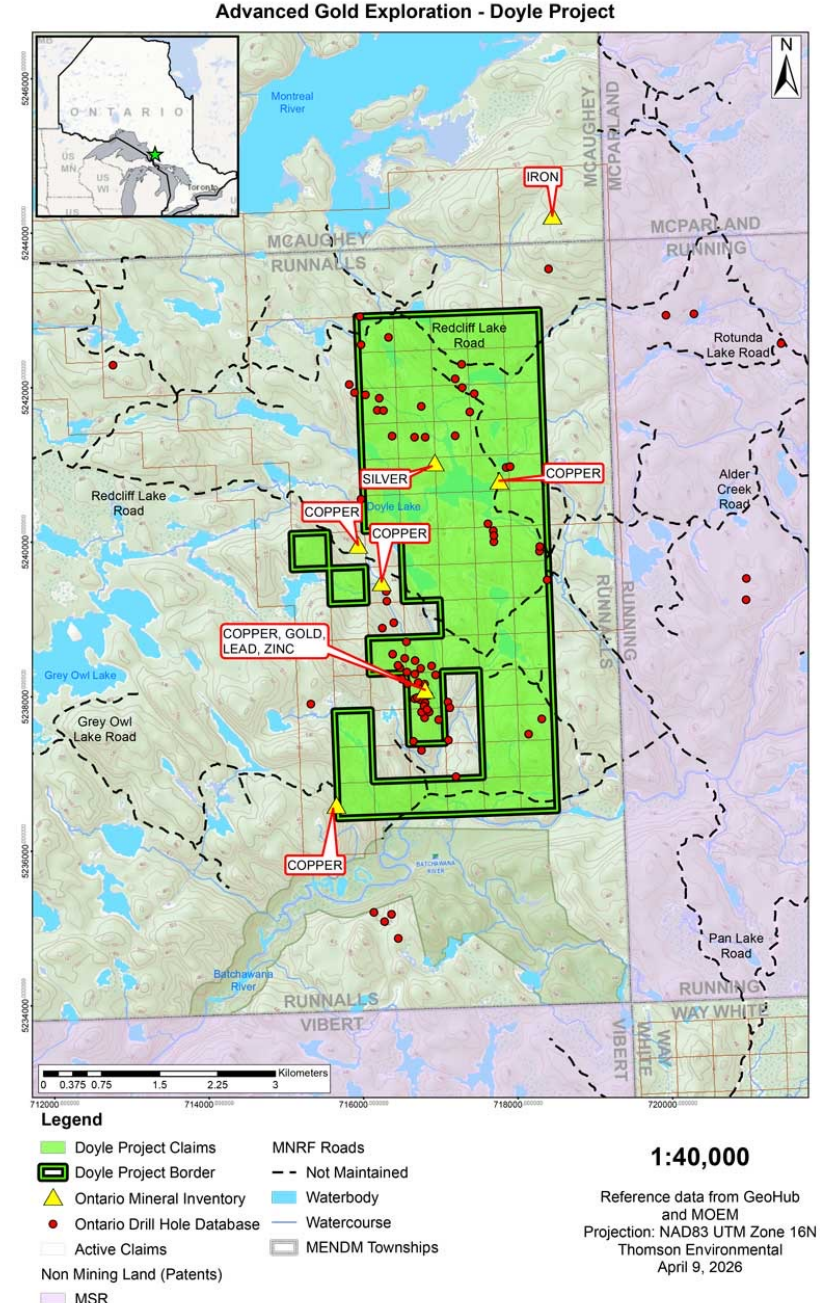
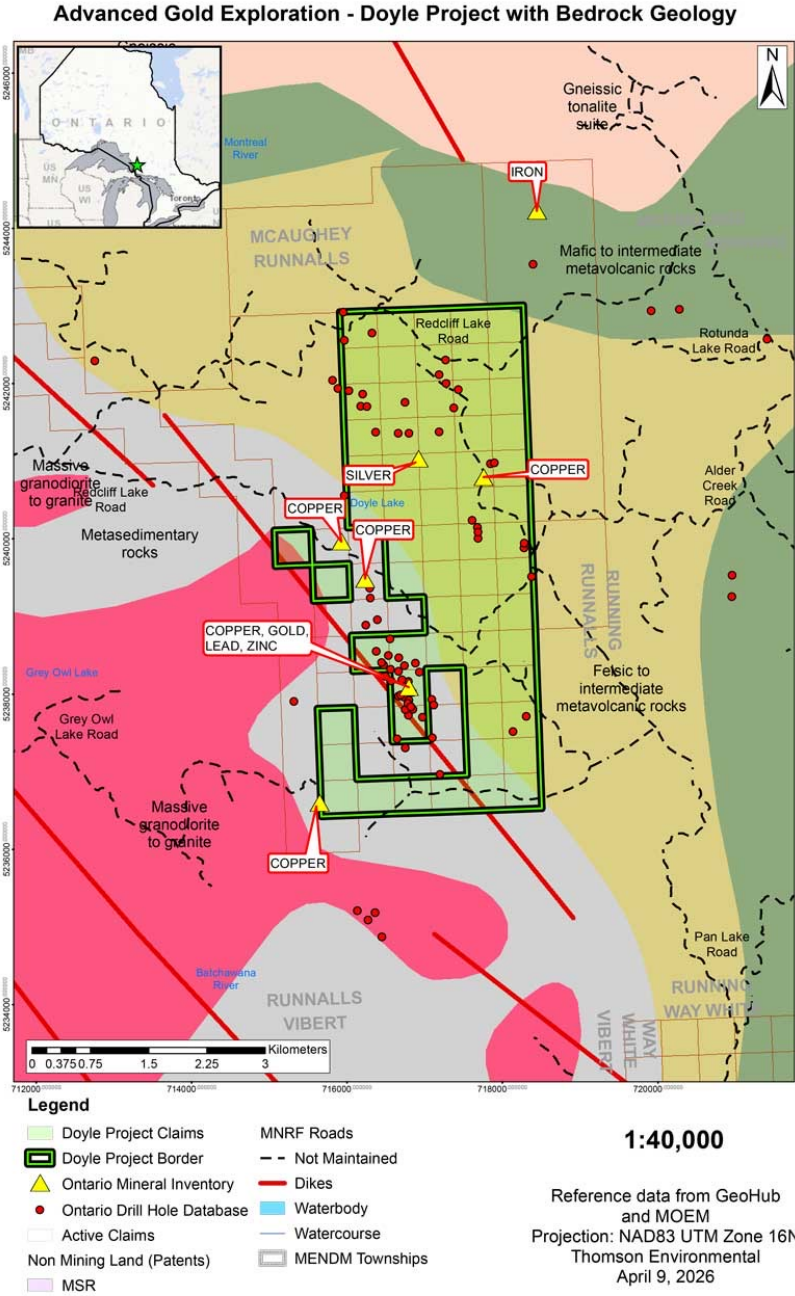


13

20

Doyle

Ontario



14

20

Doyle

Ontario

History

Gold showings in the Batchawana belt; historical drilling identified high-grade Au intersections; 2024 surface prospecting found visible gold and rock samples up to 13.2 g/t Au.

Geology

Structurally controlled orogenic gold in Archean greenstone belt; quartz veins in felsic tuff with multiple sulphide-chert horizons and brittle-ductile shear zones.

Hemlo: 20km Away

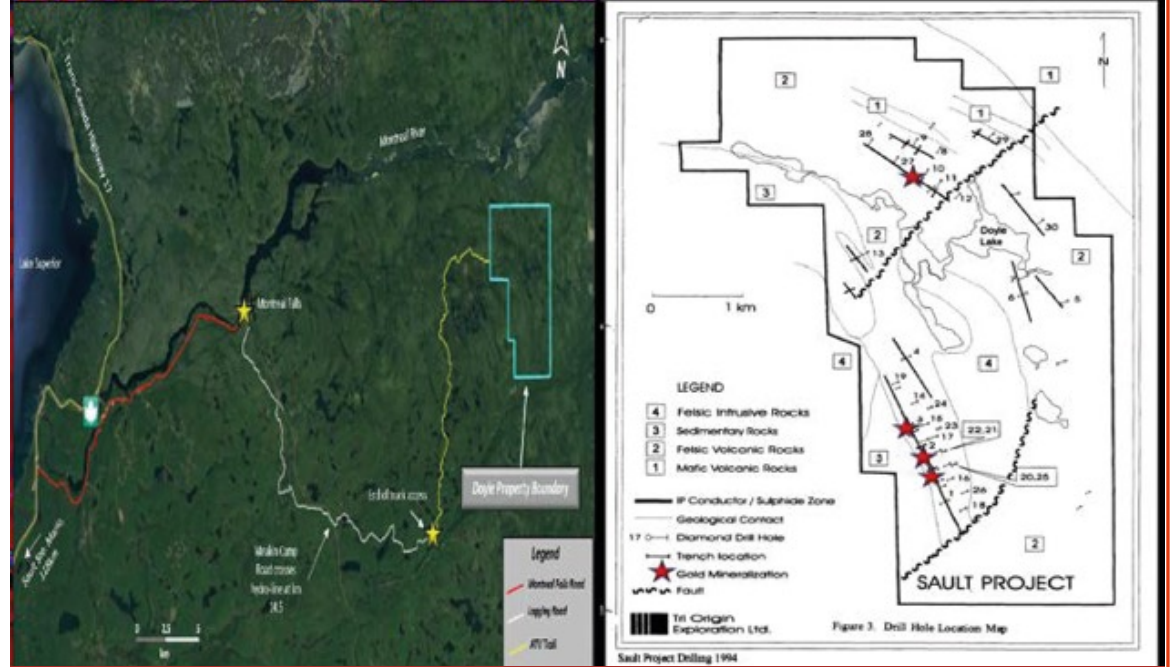
Regional Precedent Identical Despots Same Belt

HEMLO (20+ Moz)

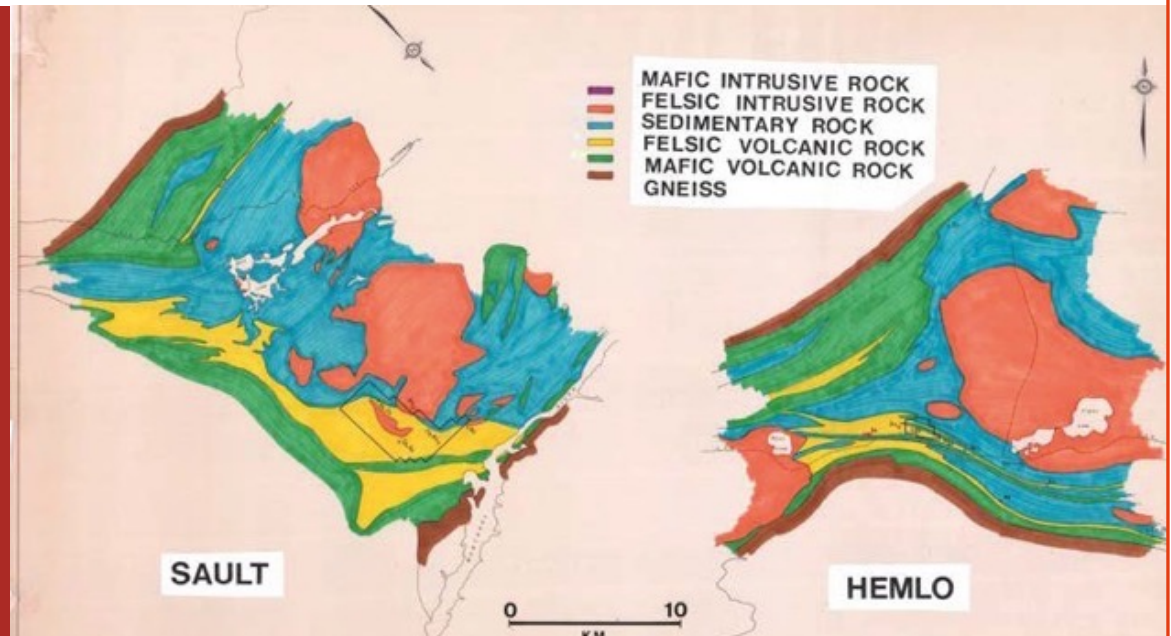
- Archean greenstone
- Orogenic Au vein
- Quartz veins in felsic tuff
- 10-50 g/t Au typical

DOYLE (undetermined)

- Archean greenstone
- Orogenic Au vein
- Quartz veins in felsic tuff
- 49.8 g/t Au documented*



Doyle Property - North of Sault Ste Marie



Doyle & Hemlo

Market Tailwinds

| | | | | |
|---|--|--|--|---|
|  |  |  |  |  |
| <p>>1,000 t/year Gold Buying</p> <p>Central banks set new 3-year record, driving safe-haven demand</p> <p>Source: World Gold Council, Gold Demand Trends Full Year 2024 (published 5 Feb 2025) – central banks added 1,045 t in 2024, the third consecutive year above 1,000 t.</p> | <p>+50% Copper Demand by 2040</p> <p>EV, solar, AI data centers, and electrification creating 10 Mt annual supply shortfall risk</p> <p>Source: S&P Global, Copper in the Age of AI: Challenges of Electrification (8 Jan 2026) – demand rises from 28 Mt (2025) to 42 Mt by 2040 (+50%), with a projected 10 Mt annual shortfall without new supply.</p> | <p>250% Antimony Price Surge</p> <p>Critical mineral essential for defense, solar glass, renewables, and energy storage</p> <p>Source: Reuters, “China’s export ban to push antimony prices to new highs” (6 Jan 2025) – prices rose ~250% in 2024, reaching \$39,500–\$40,000/t.</p> | <p>5th Consecutive Silver Deficit</p> <p>Industrial and solar demand keep market structurally short</p> <p>Source: Silver Institute, World Silver Survey 2025 & press release (29 Jan 2025) – 2025 marks the fifth successive structural deficit (95 Moz projected for 2025, following deficits every year since 2021).</p> | <p>Tier-1 Supply Gap</p> <p>North American focus on secure domestic sources creates opportunity for AUEX in Nevada & Ontario</p> <p>Source: U.S. Department of Energy / Carnegie Endowment reports on critical minerals strategy (2025–2026) + Ontario Critical Minerals Strategy update – explicit policy push for secure North American supply chains in Tier-1 jurisdictions (Nevada & Ontario) for antimony, copper, gold, and silver.</p> |

Experienced Team

Track record of discovery, financing, and value creation



James Atkinson M.Sc., P. Geo
Chairman and Director

President of Talisker Gold Corp. Director of Publicly listed companies - Frontline Gold, CBLT, Big Red Mining. Over 50 years in the industry. Recent transactions included sale of Talisker assets Angus Gold. \$2.2 million financing for exploration.

17



Arndt Roehlig
President, CEO and Director

Mr. Roehlig has served on numerous Canadian public company boards operating in the resource and technology sectors. As president and chief executive officer of various companies, Mr. Roehlig has raised millions of dollars for TSX Venture Exchange and CSE listed companies. Mr. Roehlig has decades of corporate experience in the management and development of publicly traded companies.

20

Experienced Team

Track record of discovery, financing, and value creation



Jason Baker
CFO and Director

Mr. Baker is a finance professional with Altus Capital Partners, a boutique investment bank based in Vancouver, BC. Over the past two years, he has helped raise more than \$35-million in equity financings for public and private companies, including Scorpio Gold Corp. and Magma Silver Corp. He has served as CFO and as a board member of multiple public and private companies and currently serves in these roles for Magma Silver Corp. Mr. Baker holds a Bachelor of Commerce in Finance from the UBC Sauder School of Business and an Accounting Diploma from Langara College.

18



Shahab Samimi
Independent Director

An experienced investor and corporate director with a strong background in capital allocation and public company governance. Mr. Samimi has direct public board experience, having served on the board of Canada's first publicly listed EV (electric vehicle) charging infrastructure company, Hypercharge Networks, and as Chief Executive Officer of Humanoid Global. He brings valuable expertise in technology-driven growth, sustainability and resource - intensive industries to the mining exploration sector.

20

Share Structure

| | |
|--|--|
| Canadian Securities Exchange: AUEX | Issued and outstanding: 23,499,013 |
| OTCQB Venture Market: AUHIF | Outstanding Warrants: 5,572,134 |
| Frankfurt Stock Exchange: ZF2 | Outstanding Options: 500,000 |
| | Insiders hold approximately: 20.3% |



Contact Us

Arndt Roelig, CEO

Advance Gold Exploration Inc.

606 - 30 Duncan Street, Toronto, ON M5V 2C3, Canada

Tel: +1 (604) 318-1034

Email: arndt@advancedgoldexploration.com

